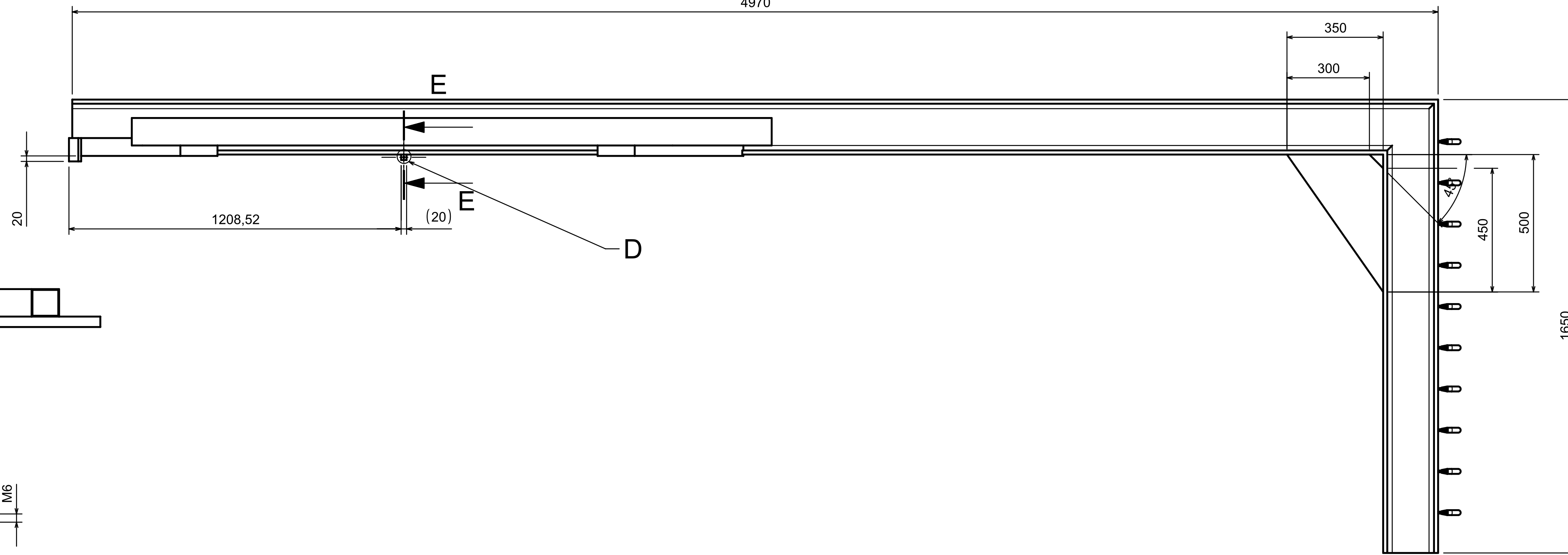
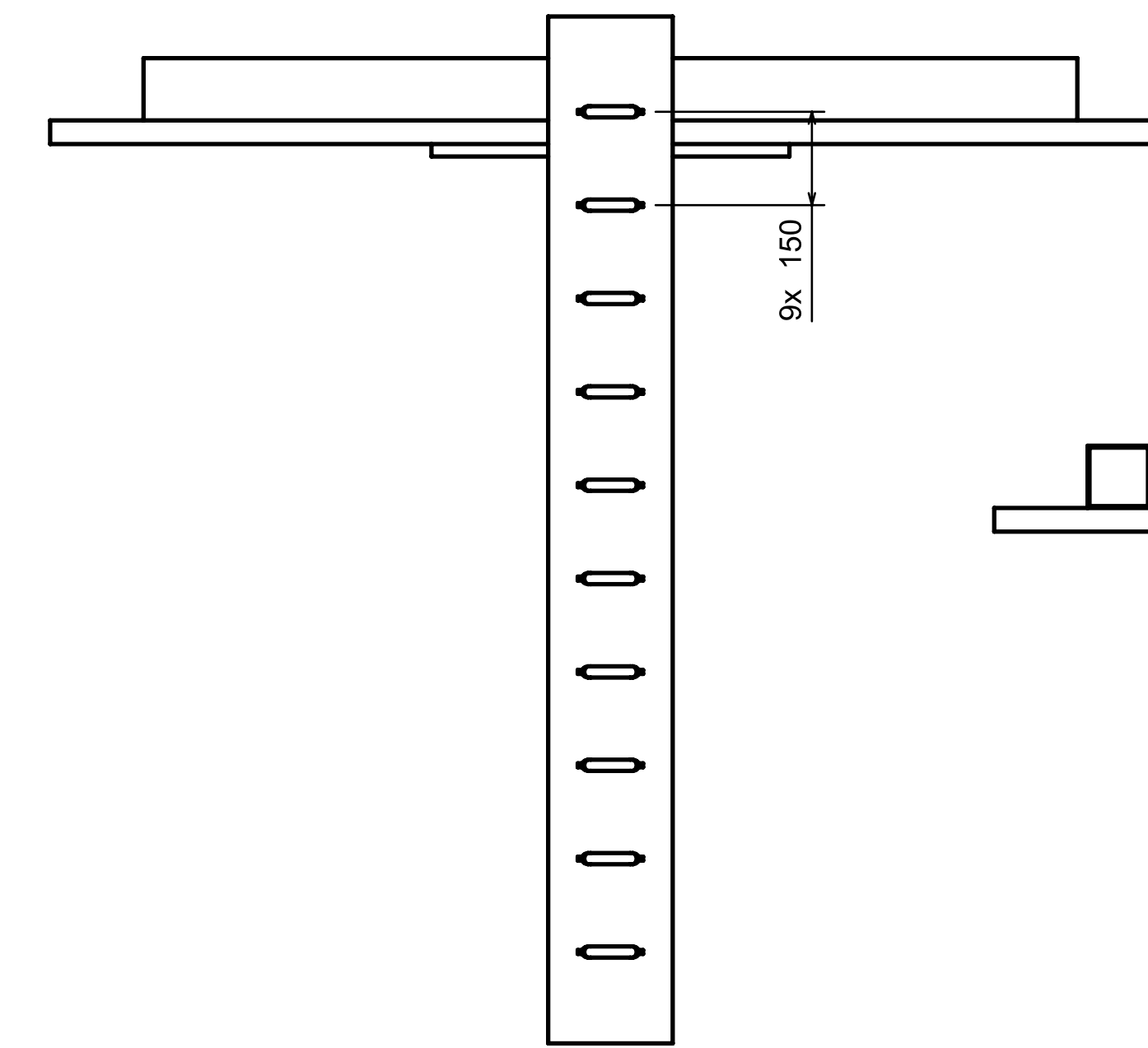
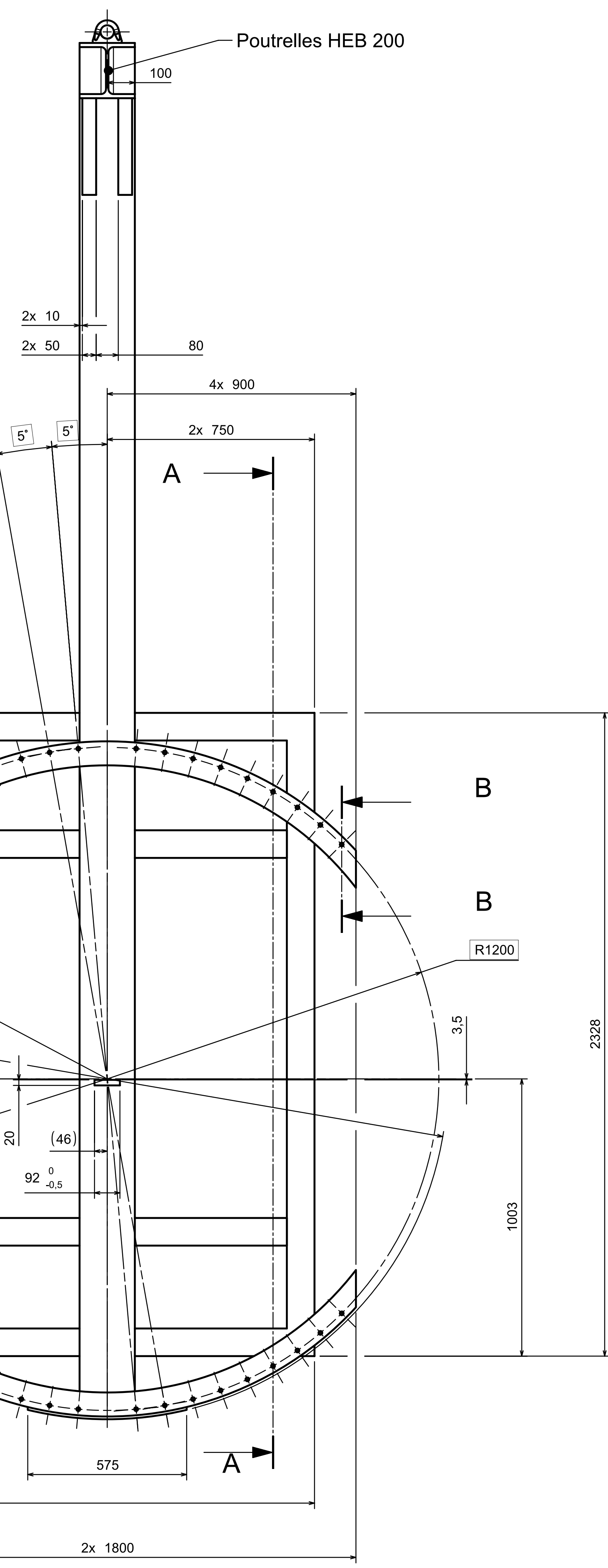
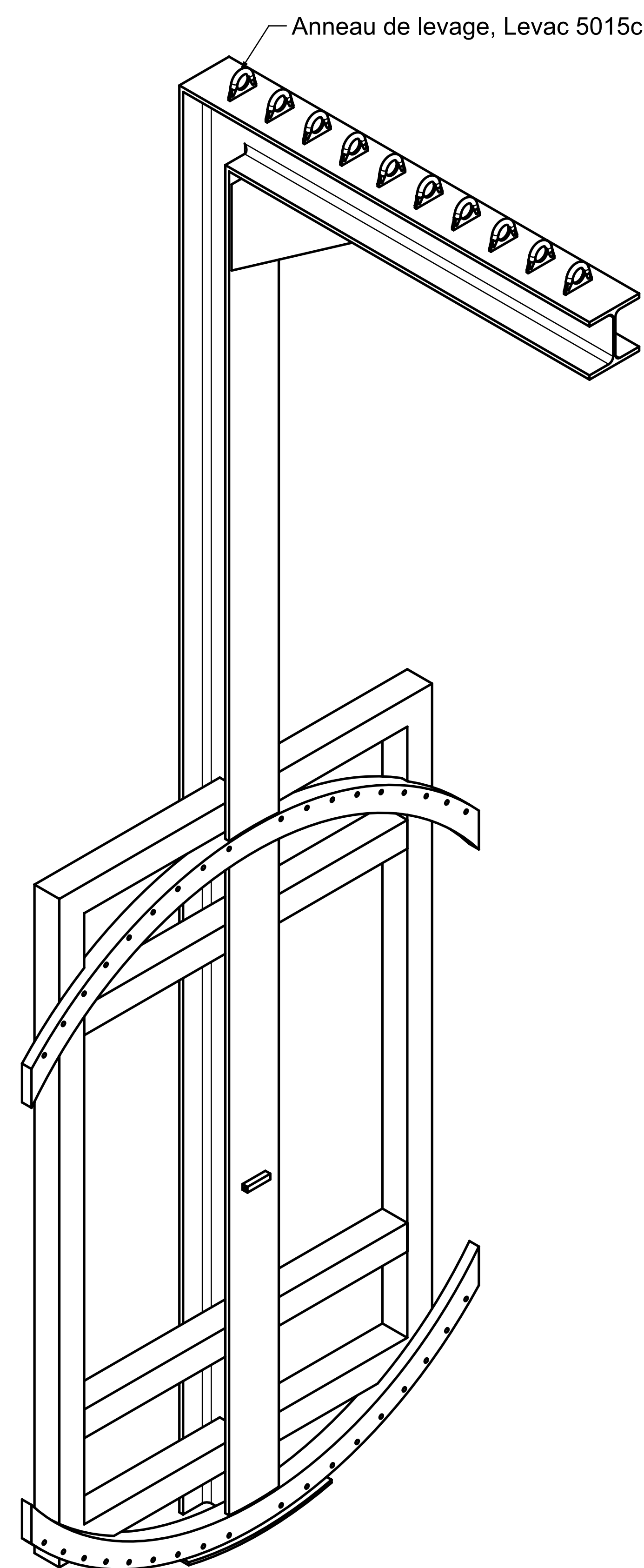
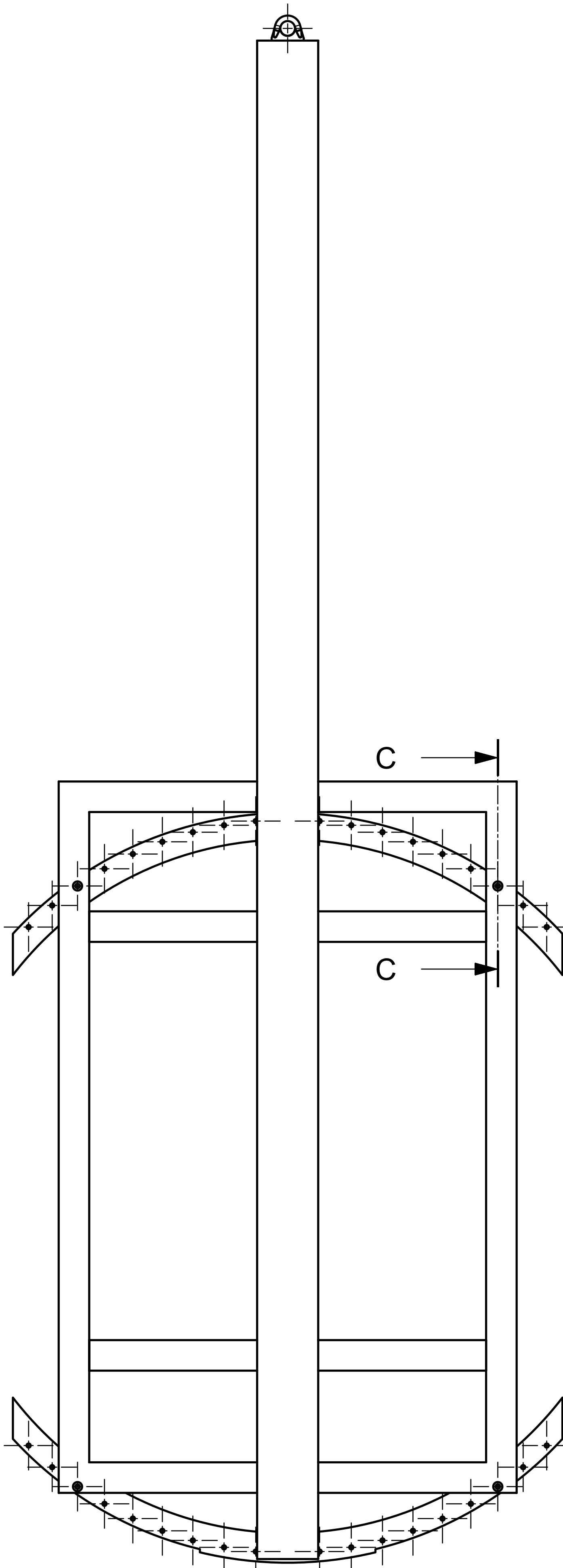


Technical drawing of a vertical profile. The drawing shows a cross-section of a profile with various dimensions and labels. The main dimensions are 525 (total height), 38 (width of the top section), 27 (width of the middle section), 65 (width of the bottom section), 500 (height of the main body), and 61,2 (height of the base). The label 'PROFILE CARRE 10x10x3' is at the top right. The label 'DE' is at the bottom right, and 'ECH' is below it. The drawing is a technical drawing of a vertical profile, likely a door or window frame, showing a cross-section with various dimensions and labels. The main dimensions are 525 (total height), 38 (width of the top section), 27 (width of the middle section), 65 (width of the bottom section), 500 (height of the main body), and 61,2 (height of the base). The label 'PROFILE CARRE 10x10x3' is at the top right. The label 'DE' is at the bottom right, and 'ECH' is below it. The drawing is a technical drawing of a vertical profile, likely a door or window frame, showing a cross-section with various dimensions and labels.



Dessin exécuté selon les Normes I.S.O. / Drawing created with I.S.O. norms.